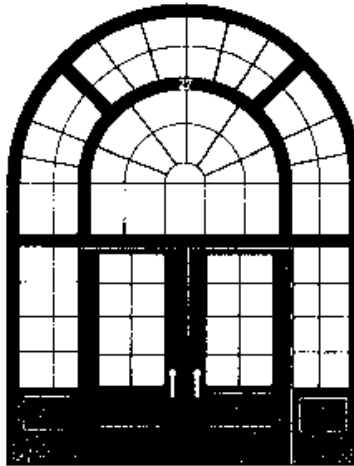


Martin W. Kappel Theater TECHNICAL INFORMATION



Chenango County Council of the Arts
27 West Main Street
Norwich, NY 13815
www.chenangoarts.org
607-336-2787

Table of contents

STAGE.....	2
RIGGING.....	3
MASKING.....	3
LOAD-IN.....	4
LIGHTING.....	4
COMMUNICATION.....	6
SOUND SYSTEM.....	7
STAGE EQUIPMENT.....	8
DRESSING ROOMS.....	9
CLOSING.....	9

AUDITORIUM

Seating capacity

506 (177 balcony, 329 orchestra)

Year built

1900, renovated in 1996

Materials

House walls and ceiling are plaster – large windows in house right wall
House left and right walls covered with red Velour curtains

Dimensions

Stage edge to back wall of house (on CL) – 51'-9"

Total width (wall to wall) – 63'

Stage edge to balcony edge (on CL) – 30'-8"

Ceiling height – 25'

Ceiling height under balcony – 9'-5"

STAGE

Proscenium

Height – 16'-8"

Width – 49'-6"

Stage Dimensions

Grid height – 19'

Ceiling height – 24'

Total width (wall to wall) – 63'

Stage edge to back wall (on CL) – 24'-9"

Stage edge to center apron edge (on CL) – 4'

Total depth center apron edge to back wall (on CL) – 28'-9"

Wings

Center line to stage walls – 31'-6"

Minimum possible wing space – 4'-6"

Maximum possible wing space – 9'

Aprons

Center Apron

Custom built from $\frac{3}{4}$ " plywood platforms

Depth from stage edge – 4'

Width – Varies from 32' to 24' (moving down stage)

Left Apron

Located down stage left of the proscenium opening

Used for storage of the grand piano

Depth from stage edge – 8'-6"

Width – Varies from 13' to 8'-2" (moving down stage)

Floor

Stage – Tongue and groove wood painted flat black

Left apron – Tongue and groove wood painted flat black

Center apron – $\frac{3}{4}$ " Plywood painted flat black

Orchestra Pit

The hard wood floor between the center apron and the first row of seats may serve as an orchestra pit – it is level with the house floor

(2) mobile stair units provide access between the pit and the stage

Pit dimensions with stair units in default positions – 6'6"x28'

Pit dimensions with stair units removed – 8'x45'

Crossover

Space behind the traveler or cyclorama used as crossover space

RIGGING

Masking and lighting pipes are hung directly from the stage grid (no fly system available). Due to this configuration the masking and lighting pipe positions are fixed and may not be adjusted in preparation for an event. The hanging of any scenery from the stage grid or any of the masking or lighting pipes must be arranged in advance and performed only by qualified theater technicians.

MASKING

Grand valence

5'x54' Red Velour – box pleated 12" centers

Distance from stage edge (on CL) – 2'-6"

Height from stage floor to bottom of valence – 13'

Grand curtain

(2) sections of 16'10"x30' Red Velour – box pleated 12" centers

Draw action only – manually operated from stage right

Distance from stage edge (on CL) – 3'

Maximum open width – 44'

Borders

5'x52' Black Velour – box pleated 12" centers

(3) located at 6'-5", 12'-1", and 17'-0" from stage edge (on CL)

Height from stage floor to bottom of border – 13'-6"

Legs

15'-9"x5' Black Velour – box pleated 12" centers

(4) sets located at 6'-9", 9', 11'-5", and 16' from stage edge (on CL)

Each leg may be moved along a section of track and rotated as needed

The first (3) sets of legs are mounted on 10' tracks

The last set of legs are mounted on 8' tracks and are equipped with hand operated brakes that must be released in order to move each leg

Olio

(2) sections at 16'-0"x27'-0" – Black, sewn flat

Distance from stage edge (on CL) – 13'

Traveler

(2) sections of 17'-8"x27' Black Velour – box pleated 12" centers

Distance from stage edge (on CL) – 21'-6"

Cyclorama

18'-6"x52' Light blue with a couple minor patches
Distance from stage edge (on CL) – 22'
Gathered and tied to the grid for storage – only lowered when needed
Only sufficient lighting instrumentation to provide (1) color across the entire cyclorama or (2) colors across half the cyclorama – if additional colors are required additional instrumentation must be arranged in advance

LOAD-IN

There is no dock-level load-in site. Please refer to the separate drawing titled Load-In Routes for detailed information on load-in entrances and obstacles.

On Stage Doors

- (1) up stage right – 4'-11"x12' double doors to East hallway
- (1) stage left – 3'-3"x6'-11" exterior door to metal fire escape stairs

Maple Street entrance

Primary load-in site on West side of building – primary obstacle is a staircase from street level to the first floor – refer to separate load-in packet for more detailed information

Senior Housing entrance

Secondary load-in site on East side of building – use of this site must be arranged in advance because it requires passage through *Norwich Senior Housing* on the East side of the building

LIGHTING

Instrumentation is typically hung and focused according to the Kappel Theater repertory lighting plot. The actual state of the instrumentation at any given time may vary to some extent from the repertory lighting plot. Changes to the repertory lighting plot should be discussed and all relevant paperwork supplied well before the event date. The fixed on stage rigging and the lack of a permanent technical crew on staff means extensive re-hanging and re-focusing takes time. Any work with the lighting instrumentation must be performed by qualified theater technicians only.

Lighting Control System

Control console

ETC *Idea* computerized control console
(2) scene cross fading, (512) dimmers, (36) channels, (120) recordable cues, (36) recordable submasters
Located in balcony control booth

Dimmers

Dimmer per circuit
(102) 2.4kw ETC *Sensor* dimmers
All circuits terminate at stage pin outlets

DMX inputs

- (1) located in balcony control booth
- (1) located down stage left
- (1) located down stage right

Remote focus unit

- Provides viewing of single dimmers or channels at full intensity
- Cycles through single dimmers or channels in forward direction only

Lighting Positions

Front of House

Booms

- (1) on each side of the house even with the balcony edge
- Height above stage floor – 10'
- Distance from stage edge along center line – 29'
- Distance from center line – 30'
- Circuits – (6) each (distributed via raceways)

FOH pipe

- Height above stage floor – 19'-6"
- Distance from stage edge along center line – 38'
- Circuits – (24) (distributed via raceway)

On Stage

- On stage lighting pipes are not equipped with raceways

LXG1 position

- LXG1 refers to the space between the grand valence and the first black border – instruments on LXG1 are hung directly from the stage grid

LX2 pipe

- Height above stage floor – 17'
- Distance from stage edge – 7'-11"

LXG2 position

- LXG2 refers to instruments hung directly from the stage grid between the first and second black borders

LX2 pipe

- Height above stage floor – 17'
- Distance from stage edge – 16'-0"

LXG3 position

- LXG3 refers to instruments hung directly from the stage grid between the second and third black borders

LX4 pipe

- Height above stage floor – 17'
- Distance from stage edge – 19'-10"

Outlet Boxes

- (1) wall box located up stage right with (3) circuits
- (1) wall box located down stage left with (3) circuits
- (6) with (6) circuits each distributed in a 2x3 pattern on the grid
- (3) with (5) circuits each distributed in a 1x3 pattern on the grid

Instrumentation

All equipped with safety cables, color frames, and stage pin connectors
Some instruments in inventory may not currently be in service

- (12) Altman 6" Fresnels – 500w
 - (18) Altman PAR 64's – 1000w MFL
 - (19) Altman 6x9 360Q ellipsoidals – 500w
 - (16) Altman 6x12 360Q ellipsoidals – 500w
 - (8) Altman 6x16 360Q ellipsoidals – 500w
 - (2) Altman 6x16 360Q ellipsoidals with built-in iris – 500w
 - (4) Altman single circuit *Sky Cyc's* – 1000w
 - (4) Altman (4) circuit *Zip Strip* striplights – 400w per circuit
- Total instruments in inventory – 83

Accessories

Side arms, color frames, template holders, donuts, twofers, cable, floor bases, Altman wrenches, uncoated tie line, stage pin lamp tester

Free standing booms may be available if arranged in advance

Color Filters

A variety of color filters are available both pre-cut for various instruments and in sheets – most available filters are *Roscolux* brand

Groups may purchase additional filters or supply their own – if the theater is to supply specific color filters on a contractual basis effort will be made to supply the exact filter requested or an approved alternative

Followspots

- (2) Altman *Comet* followspots with 360w halogen lamps

Located in house left and right corners of balcony

Height above stage floor – 14'-6"

Distance from stage edge along center line – 47'-6"

Distance from center line – 29'-6"

House Lights

- (6) house chandeliers with (4) lamps each – wired to dimmer #97
- (2) balcony chandeliers with (1) lamp each – wired to dimmer #98
- (2) fixtures under balcony, (1) track lighting strip under balcony, (6) sconces under balcony – all wired to dimmer #102

COMMUNICATION

Headsets

Telex system with headset inputs located throughout the theater

- (6) belt packs available

- (3) single ear headsets

- (2) dual ear headsets

Default positions are (1) stage right, (2) in control booth, (1) at each followspot position – may be reconfigured as necessary

Audio Monitoring System

(1) Shure 545L microphone hung from the grid provides monitoring to speakers in the dressing room and control booth – no paging system available

Video Monitoring

Cameras and monitors are not available for video monitoring – if groups would like to bring equipment for video monitoring there is a coaxial cable running from the house left followspot position to upstage right

SOUND SYSTEM

The sound system is designed to provide (2) monitor mixes from (1) front of house mixing position. If any of the following are required;

Amplification that exceeds the capabilities of the available speakers

Significant incorporation of compression, reverb, and other digital effects

Additional monitor mixes or the use of an on stage monitor mixing console arrangements should be made for an independent system or for the integration of additional equipment with the house sound system.

Mixing Console

Behringer *SL3242FX-PRO*

(24) mono inputs, (4) stereo inputs, (4) subgroups

(2) pre-fader and (2) post-fader sends OR (4) post-fader sends

Each mono channel includes a (3) band semi-parametric equalizer

Each stereo channel includes a (4) band stereo equalizer

(2) built-in 24-bit multi-effects processors

Built-in 9-band stereo equalizer (processes MAIN or AUX1 signal)

Located in balcony level control booth, may be relocated to the balcony outside the booth if arranged in advance

Speakers

(2) JBL AS2212 2-way speakers (600w LF – 150w HF)

Bi-amplified by (1) Crown Com-Tech 800 amplifier (315w per channel)

Hung below the center of the proscenium in front of the grand valence

(5) JBL Control 5W speakers 175w

Powered by (1) Crown Com-Tech 400 amplifier (210w per channel)

Mounted along ceiling beam above the balcony edge

(12) JBL P100 40w flush mount speaker

Powered by the same amplifier as the (5) JBL Control 5 speakers

Installed in the ceiling underneath the balcony

Portable Speakers

(3) Yamaha SM12III 200w Club series monitors

Powered by (1) Crown Com-Tech 800 amplifier (315w per channel)

Outputs for monitors are located throughout the theater

(2) Yamaha C115V 500w Club Concert series speakers

Powered by (1) Yamaha P7000S amplifier (750w per channel)

Martin W. Kappel Theater Technical Information

By default these are mounted on stands at each side of the proscenium, please arrange relocation or removal in advance

Playback and Recording

No recording equipment available

- (1) Technics 5-disc CD player located in balcony control booth

Microphones

- (4) Shure Beta 58A's
- (4) Shure Beta 57A's
- (2) Shure PG58 Wireless microphones with PG4 receivers
- (3) Crown PCC-160's

Microphone inputs are located around the perimeter of the stage

Accessories

Microphone stands

- (3) Atlas Sound telescoping stands – 1" diameter, flat black
- (4) Atlas Sound telescoping stands – 3/4" diameter, flat black
- (1) Atlas Sound telescoping stand – 1" diameter, chrome
- (1) Atlas Sound telescoping tabletop stand – 3/4" diameter, chrome
- (3) Atlas Sound 24" booms – flat black
- (1) Atlas Sound 18" boom – flat black

Various lengths of XLR microphone cable

Various lengths of 1/4" TRS mono speaker cable

- (2) Pro Co Model DB-1 direct boxes
- (6) Music stands with lights

Electrical Tie-in

No company switch available

- (3) 20A circuits are available in the stage left sound cabinet that may be used to power an independent sound system

Additional 20A circuits are available around the perimeter of the stage

FOH Mixing Position

The location of the Front of House mixing position should be arranged in advance to minimize the loss of audience seating – independent mixing consoles are typically positioned in the up house right corner of the theater either underneath the balcony or in the balcony

STAGE EQUIPMENT

Pianos

- (1) 7' Baldwin grand piano – stored on left apron
- (1) Black Acrosonic console piano – located in house

Ladders and Scaffolding

- (2) Wooden A-frame ladders
- (1) 6' Aluminum A-frame ladder
- (1) 6' Aluminum custom A-frame ladder for FOH focusing
- (1) *UpRight* VX DW scaffolding unit for on stage focusing – stored stage left but may be disassembled and removed from stage if arranged in advance

Martin W. Kappel Theater Technical Information

Video Projection

(1) Dell video projector – available for rental at an additional fee
No large video projection screen currently available – must project on small slide projector screen or on the cyclorama
Use and configuration of the projector must be arranged in advance

Miscellaneous

Metal folding chairs, wood folding chairs with padded seats, folding tables, podium, slide projector screen, clip lights, extension cords, power strips, stanchions and ropes, carpet for drum set, miscellaneous scenic materials including 4x8 platforms, lumber, fasteners, and painting supplies

DRESSING ROOMS

Dressing/Green Room

Only one formal dressing room – also serves as the company green room
Includes (2) changing cubicles and make-up tables with seating for (8)
Make-up tables are equipped with large well-lit mirrors
Location – back stage through the upstage right load-in doors
Dimensions – 16'x13' with 12' ceiling height
Changing cubicles – 5'6"x5'6" with 8' ceiling height

Restrooms

Located near the dressing room – the wheelchair accessible restrooms available for audience members are shared with the dressing room
No showers are available on site

Laundry

No laundry facilities available on site
The nearest Laundromat is *Arrow Laundry & Dry Cleaning*
607-334-4131 – 7:00am-10:00pm all week – 68 East Main Street

Additional Dressing Space

The room 106 storage space and the room 107 classroom may be equipped with chairs, tables, mirrors, and clothing racks for additional dressing space – must be arranged in advance
Room 106 – 300 square feet (some lost to storage of flats and equipment)
Room 107 – 638 square feet – 29'x22'
It may be possible to arrange for more dressing or green room space in special circumstances – must consult with staff and arrange in advance

CLOSING

Please contact the Technical Director of the theater with questions regarding the Martin W. Kappel Theater technical information. The Technical Director may be contacted through the Chenango County Council of the Arts.
Technical drawings of the theater are also available and include a theater elevation, theater plan, repertory light plot, load-in map, and theater interface

Martin W. Kappel Theater Technical Information

diagram. Contact information for the Chenango County Council of the Arts is available on the cover page of this technical information.